

Electronic Single Fiber Strength Tester Model: ADL-FTS10

Application

Electronic Single Fiber Strength Tester is used for measuring the breaking force, initial modulus, elongation at break, constant elongation load, constant load elongation, creep, stress relaxation, etc. of various single fibers.

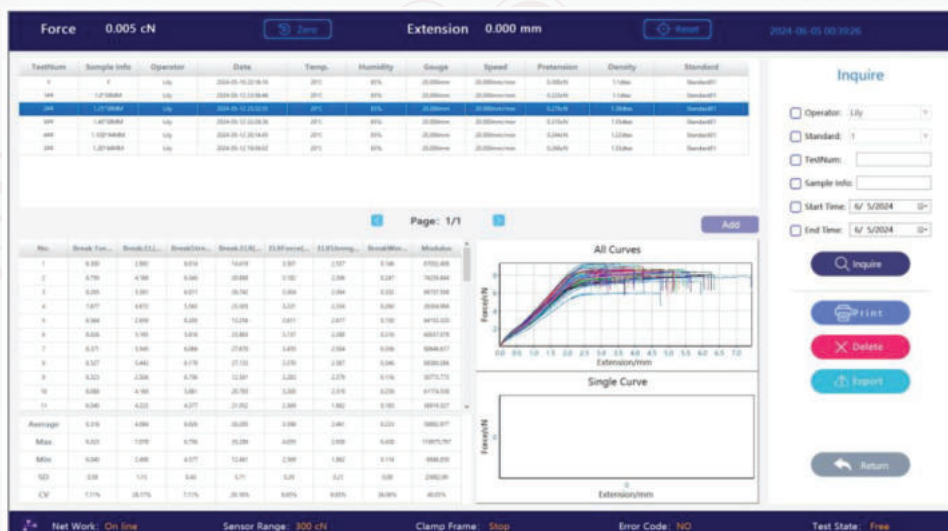
Standards

ISO5079, ASTM D3822, GB/T14337, GB/T13835.5

Note: this tester can conform to but not limit to the standards above, for more standards conformance, please contact us.

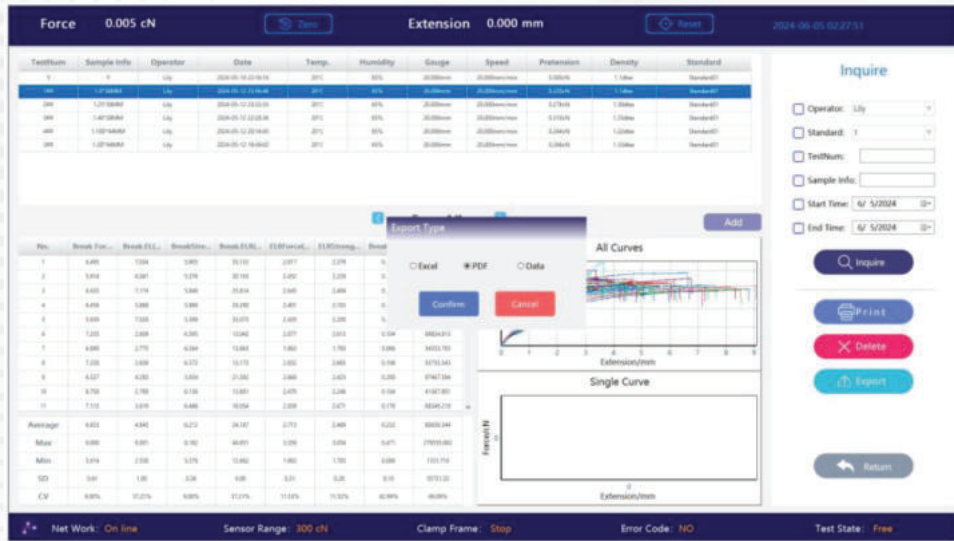
Features

- The pneumatic gripper with unique patented technology ensures a stable clamping force for the sample, ensuring complete adhesion of the clamping surface and preventing sample damage or slipping during experiments;
- The drive system is composed of precision ball screws and Panasonic servo motors, which have the advantages of precise displacement measurement, low noise, and stability. The gauge length and stretching speed can be set arbitrarily within the applicable range;
- The software is divided into five modules according to functions, with intuitive interface and simple operation.
- It can perform computer control operations and provide detailed testing and historical data, reports, graphics, and establish databases;



Electronic Single Fiber Strength Tester Model: ADL-FTS10

- Flexible operation, the operator can select the exported report and data.



- The operating area is illuminated by soft LED lighting, which facilitates sampling and testing by the experimenter.

Specification

- Type : Constant Rate Elongation (CRE)
- Clamping method : Pneumatic clamping
- Force measurement range : 0~300cN, Resolution: 0.01cN
- Pre tension : 0.01~30.00cN
- Gauge length : 10-60mm
- Displacement measurement accuracy: 0.01mm
- Maximum elongation : 130 mm (When the gauge length is 10mm)
- Stretching speed : 2-100mm/min
- Test method : Constant speed stretching; Constant elongation load; Constant load elongation; Creep; Stress Relaxation
- Test data output : Computer storage, printing and export
- Color touch screen size : 7 inches
- Servo motor and driver : Panasonic
- Computer : Computer: Lenovo all-in-one PC; Processor: Intel i5; Memory: 8GB; Hard disk: 512G SSD
- Overall dimensions : 450*510*580mm (W*D*H)
- Power supply : AC220V ± 10%, 110W

Standard Configuration:

- Main machine - 1 set
- Software - 1set
- Tension clamps - 1set

Optional Accessories: Printer, Air compressor

**Technical Data Subject to change without notice.*

AdLab is a globally recognized brand specializing in the manufacturing and supply of high-quality laboratory equipment and textile testing instruments. With over 15 years of experience, we are committed to delivering precision-engineered solutions that meet the needs of industries such as textiles, pharmaceuticals, research laboratories, and educational institutions. Our products are designed to enhance efficiency, accuracy, and reliability in scientific and industrial applications.

Our Skill

At AdLab, we combine expertise in precision engineering with advanced laboratory technology to create innovative and reliable testing instruments. Our team of skilled professionals continuously works on improving product designs, integrating the latest advancements in technology, and ensuring compliance with international quality standards. With a strong focus on research and development, we provide customized solutions that cater to the unique needs of our customers worldwide.

Our Products

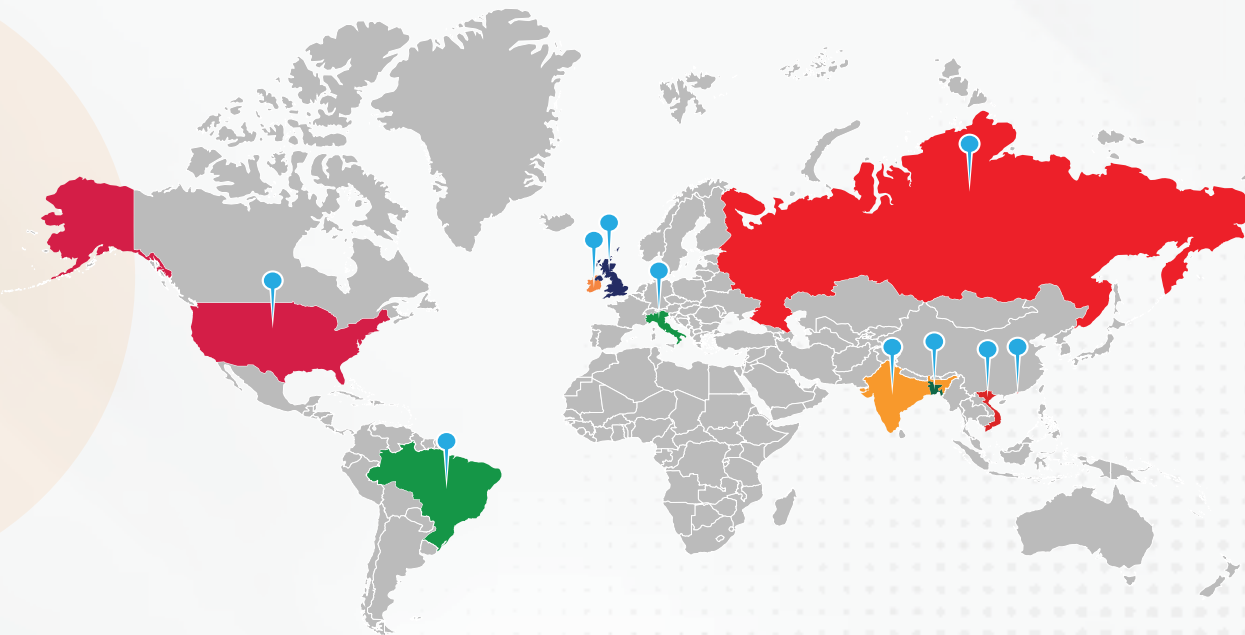
AdLab offers a wide range of high-quality laboratory and textile testing instruments, including Yarn & Fiber Testing Instruments, Laboratory Fume Hood Chambers, Ovens & Incubators, Water Baths, Textile Testing Instruments, Dyeing & Finishing Machines, Ceramic Testing, Tensile Testing, Washers & Dryers, Needle Detectors, and In-House Testing Equipment. Designed for precision and efficiency, our products ensure accurate testing and reliable performance across various industries.

Our Services

At AdLab, customer satisfaction is our top priority. We provide comprehensive support services to ensure the smooth operation of our equipment, including:

- ✓ 24/7 Technical Support Team – Our highly trained technical support team is available around the clock to assist with troubleshooting, maintenance, and operational guidance. Whether you need immediate assistance or expert advice, we are always ready to help.
- ✓ Installation & Training – We offer professional installation services and hands-on training to help users operate our equipment efficiently.
- ✓ Calibration & Maintenance – Regular calibration and maintenance services ensure that your laboratory instruments remain accurate and in optimal working condition.
- ✓ Customized Solutions – We provide tailored solutions to meet specific industry requirements, helping our clients achieve maximum efficiency in their operations.

Global Networks



Bangladesh • Brazil • China • Hong Kong • India • Ireland • Italy • UK • USA • Vietnam

AdLab Instruments Co., Ltd

★ RM 602, 6/F, Kaiyue Comm Building, No.2C, Argyle Street, Mongkok Kowloon, Hong Kong

🇮🇪 20A Cuil Na Carriage, Ballymakeera, Co-Cork, Ireland (EU)

✉ info@adlabinstruments.com 🌐 www.adlabinstruments.com