



## Martindale Abrasion and Pilling Tester Model: ADL-M04N/M05N/M09N

### Application

To determine the abrasion and pilling resistance of all kinds of textile structures. Samples are rubbed against known abrasents at low pressures and in continuously changing directions and the amount of abrasion or pilling is compared against standard parameters.

### Feature

- Standard: Lissajous figure.
- Working positions: 4, 5, 9 optional.
- The unique design allows removal of individual sample holders for examination without lifting the top motion plate.
- Standard sample holders with 9 and 12kpa weights included.
- PLC, 7 inches color touch screen, Chinese and English operation interface.
- Weights and key components are made up by stainless steel which is well-formed and durable in use.
- To prevent distortion, the top motion plate was special made up by 316 aluminum alloy.



### Product Details



Sample loading

After put sample for test, put weights according to standards



Control panel

Touch Screen

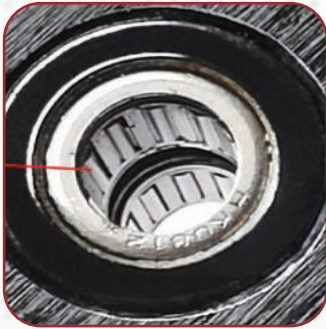
### AdLab Instruments Co., Ltd

★ RM 602, 6/F, Kaiyue Comm Building, No.2C, Argyle Street, Mongkok Kowloon, Hong Kong

🇮🇪 20A Cuil Na Carriage, Ballymakeera, Co-Cork, Ireland (EU)

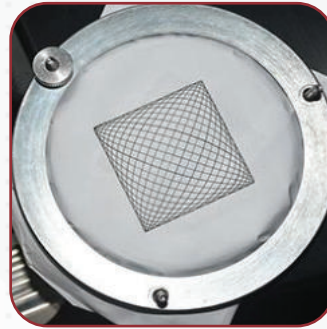
✉ info@adlabinstruments.com 🌐 www.adlabinstruments.com

## Martindale Abrasion and Pilling Tester Model: ADL-M04N/M05N/M09N



Embedded double bearing guide rod seat

Bearing



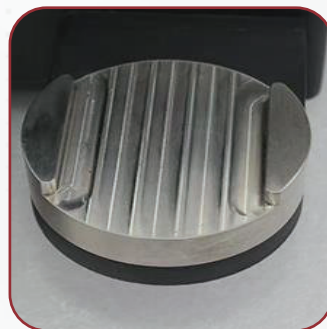
Lissajous figure

Standard



Weight 9Kpa  
Weight 12Kpa  
Pen 1pc  
Pilling device  
Pilling device  
pilling replicas(copy original rating)

Accessories



Wear-resistant fixture reinforcement device

Installation tools

### Key Specification

Number of working position	4/5/9
Test pressure	A: Cloth sample holder 155g±1g B: Clothing sample weight 260g±1
Loading hammer mass	2385g±10g
Wear resistance stroke	60.5±0.5mm
Pilling stroke	24±0.5mm
Test speed outer wheel	47.5±2.5r/min
Inner wheel	44.5±2.4r/min
Test pressure pilling resistance	595±7g/795±7g
Test pressure Abrasion resistance	415±2g
Flattening weight	weight 2.5±0.5kg diameter 120±10mm
Controller	PLC touch screen control
Grinding table diameter	120mm
Dimensions	860×610×380mm
Power supply	1 φ , AC220V, 5A
Weight	80 KG



**Martindale Abrasion and Pilling Tester**  
**Model: ADL-M04N/M05N/M09N**

## Standard

ISO 5470, DIN53863/53865, BS 3424/5690, IWTO 40-88, BS EN 388/530, IWSTM 112/196, ASTM 4966/4970, ISO 12673, JIS L1096, SFS 4328, PR EN ISO 12947-1, PR EN ISO 12945-2, SATRA TM31, ISO 20344 S EN ISO 17076, ISO 12947, ISO 12945, GB/T 21196, GB /T 4802, DIN 53863, M&S P19, P19A, P19C, PV 3928

## Accessories Included

- 3kpa weights
- 9kpa weights
- Rods of holder
- Abrasion specimen holder
- Fuzzing and pilling sample holder
- Fuzzing and pilling weights
- Fuzzing and pilling fixture
- Abradant mounting/sample
- Loading weight (about 2.4kg)
- Pilling replicas (copy of original pilling rating card)
- Standard abrasents fabric (SDC)
- Standard backing foam 38mm
- Standard woven felt discs 140mm
- Standard woven felt discs 90mm

## Optional Accessories

- EMPA Photographic standards for pilling test (3 x 4 knitted)
- EMPA Photographic standards for pilling test (3 x 4 woven)
- SM 50 Photographs for pilling test IWS + ASTM.4 Sets 1-5 (Plain, Twill A, Twill B, Blanket)
- Standard abrasents fabric
- Sample Cutter : 38mm
- Sample Cutter : 90mm
- Sample Cutter : 140mm



## AdLab Instruments Co., Ltd

★ RM 602, 6/F, Kaiyue Comm Building, No.2C, Argyle Street, Mongkok Kowloon, Hong Kong

🇮🇪 20A Cuil Na Carriage, Ballymakeera, Co-Cork, Ireland (EU)

✉ info@adlabinstruments.com 🌐 www.adlabinstruments.com

## Hydraulic Cutter

### Application Scope

It is designed for sampling and cutting of wool, cotton, chemical fiber, knitted fabric, leather and rubber etc.

### Parameters

- Top Plate Diameter: 185mm
- Max Sample Dimension: 125x125mm
- Max Sample Thickness: 50mm
- Air-Pressure: ~4kg/cm<sup>2</sup>
- Die-Cut Tools Are On-the-shelf:



Die-cut tools(multi-shape)

Round-shape: OD 38mm

Round-shape: OD 90mm

Round-shape: OD 140mm

Rectangle: 40x100mm

Rectangle: 50x150mm

Other size of tools can be customized

- Device Dimension: 44x37x65cm
- Package Dimension: 59x49x81cm
- Net Weight: 65KGS
- Gross Weight: 77KGS



*\*Technical Data Subject to change without notice.*

AdLab is a globally recognized brand specializing in the manufacturing and supply of high-quality laboratory equipment and textile testing instruments. With over 15 years of experience, we are committed to delivering precision-engineered solutions that meet the needs of industries such as textiles, pharmaceuticals, research laboratories, and educational institutions. Our products are designed to enhance efficiency, accuracy, and reliability in scientific and industrial applications.

## Our Skill

At AdLab, we combine expertise in precision engineering with advanced laboratory technology to create innovative and reliable testing instruments. Our team of skilled professionals continuously works on improving product designs, integrating the latest advancements in technology, and ensuring compliance with international quality standards. With a strong focus on research and development, we provide customized solutions that cater to the unique needs of our customers worldwide.

## Our Products

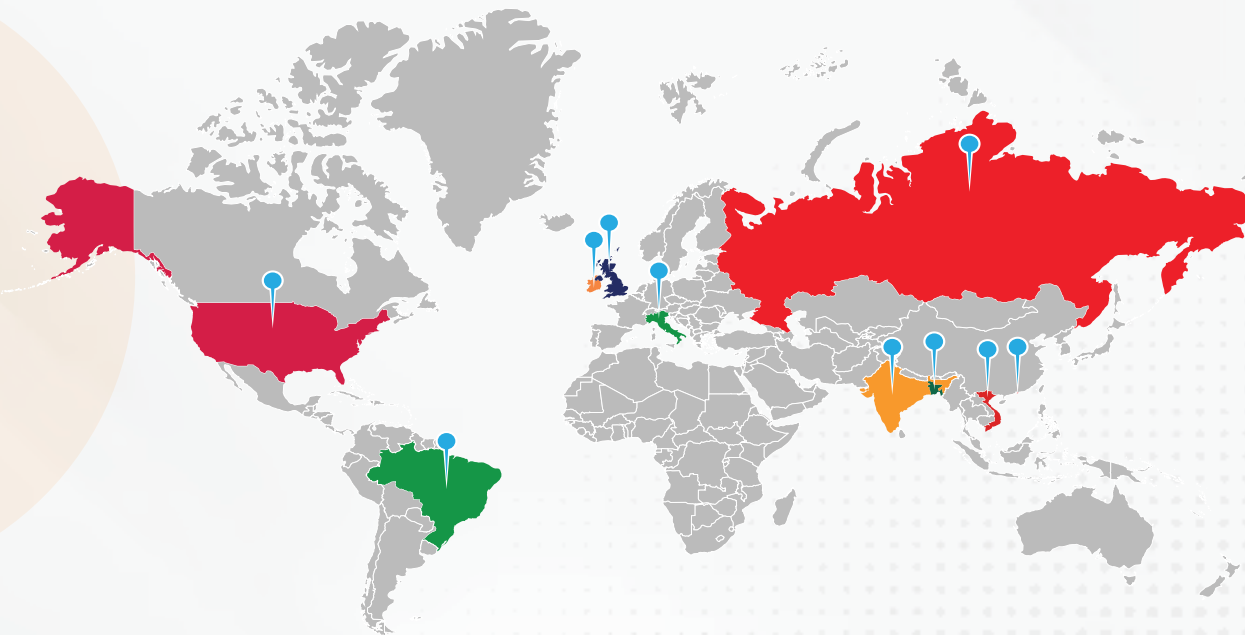
AdLab offers a wide range of high-quality laboratory and textile testing instruments, including Yarn & Fiber Testing Instruments, Laboratory Fume Hood Chambers, Ovens & Incubators, Water Baths, Textile Testing Instruments, Dyeing & Finishing Machines, Ceramic Testing, Tensile Testing, Washers & Dryers, Needle Detectors, and In-House Testing Equipment. Designed for precision and efficiency, our products ensure accurate testing and reliable performance across various industries.

## Our Services

At AdLab, customer satisfaction is our top priority. We provide comprehensive support services to ensure the smooth operation of our equipment, including:

- ✓ 24/7 Technical Support Team – Our highly trained technical support team is available around the clock to assist with troubleshooting, maintenance, and operational guidance. Whether you need immediate assistance or expert advice, we are always ready to help.
- ✓ Installation & Training – We offer professional installation services and hands-on training to help users operate our equipment efficiently.
- ✓ Calibration & Maintenance – Regular calibration and maintenance services ensure that your laboratory instruments remain accurate and in optimal working condition.
- ✓ Customized Solutions – We provide tailored solutions to meet specific industry requirements, helping our clients achieve maximum efficiency in their operations.

## Global Networks



**Bangladesh • Brazil • China • Hong Kong • India • Ireland • Italy • UK • USA • Vietnam**

### AdLab Instruments Co., Ltd

★ RM 602, 6/F, Kaiyue Comm Building, No.2C, Argyle Street, Mongkok Kowloon, Hong Kong

🇮🇪 20A Cuil Na Carriage, Ballymakeera, Co-Cork, Ireland (EU)

✉ info@adlabinstruments.com 🌐 www.adlabinstruments.com