



Laboratory Universal Electric Oven
Model: ADL-UF70



Suitable for users who have higher temperature uniformity requirements. The basis of laboratory research units supporting equipment, recommended for intermediate and senior laboratory.

Rank: ★★★★★

Application

Widely used for drying, sterilization, thermostatic storage, heat treatment and other fields.

Structure Features

- Precision LCD microcomputer intelligent PID control system, with temperature control, timing and over temperature alarm, with RS485 computer interface.
- With standard international brands cooling fan maintenance - free, durability. Perfect combination of duct design to ensure temperature uniformity for the working chamber.
- Mirror stainless steel inner, anti-acid, and anti-corrosion characteristics.
- Double tempered glass observation window in the door.
- The spaces and quantity of shelves can be adjusted.

Model	Temp range (°C)	Accuracy (°C)	Fluctuation (%)	Voltage (V)	Power (KW)	Inner size (mm) (H×W×D)	Overall dimension (mm) (H×W×D)	Packing size (mm) (H×W×D)	Net weight (KG)	Shipping weight (KG)
ADL-UF70	RT+5 ~250	±1	±1	220	1.2	420*450*350	630*740*550	750*820*630	47	50

C type is with digital controller, the standard is with LCD controller.

AdLab Instruments Co., Ltd

★ RM 602, 6/F, Kaiyue Comm Building, No.2C, Argyle Street, Mongkok Kowloon, Hong Kong

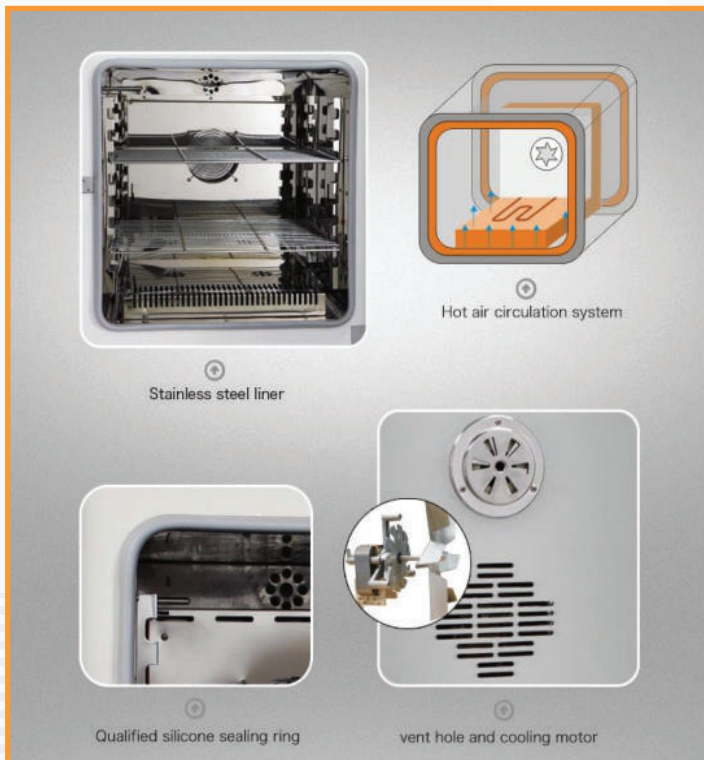
🇮🇪 20A Cuil Na Carriage, Ballymakeera, Co-Cork, Ireland (EU)

✉ info@adlabinstruments.com 🌐 www.adlabinstruments.com

Laboratory Universal Electric Oven Model: ADL-UF70

Optional Product Accessories

1. Portable printer
2. Programmable multi-stage controller
3. ALLSENSTM software
4. individual temperature limit



Optional Parts





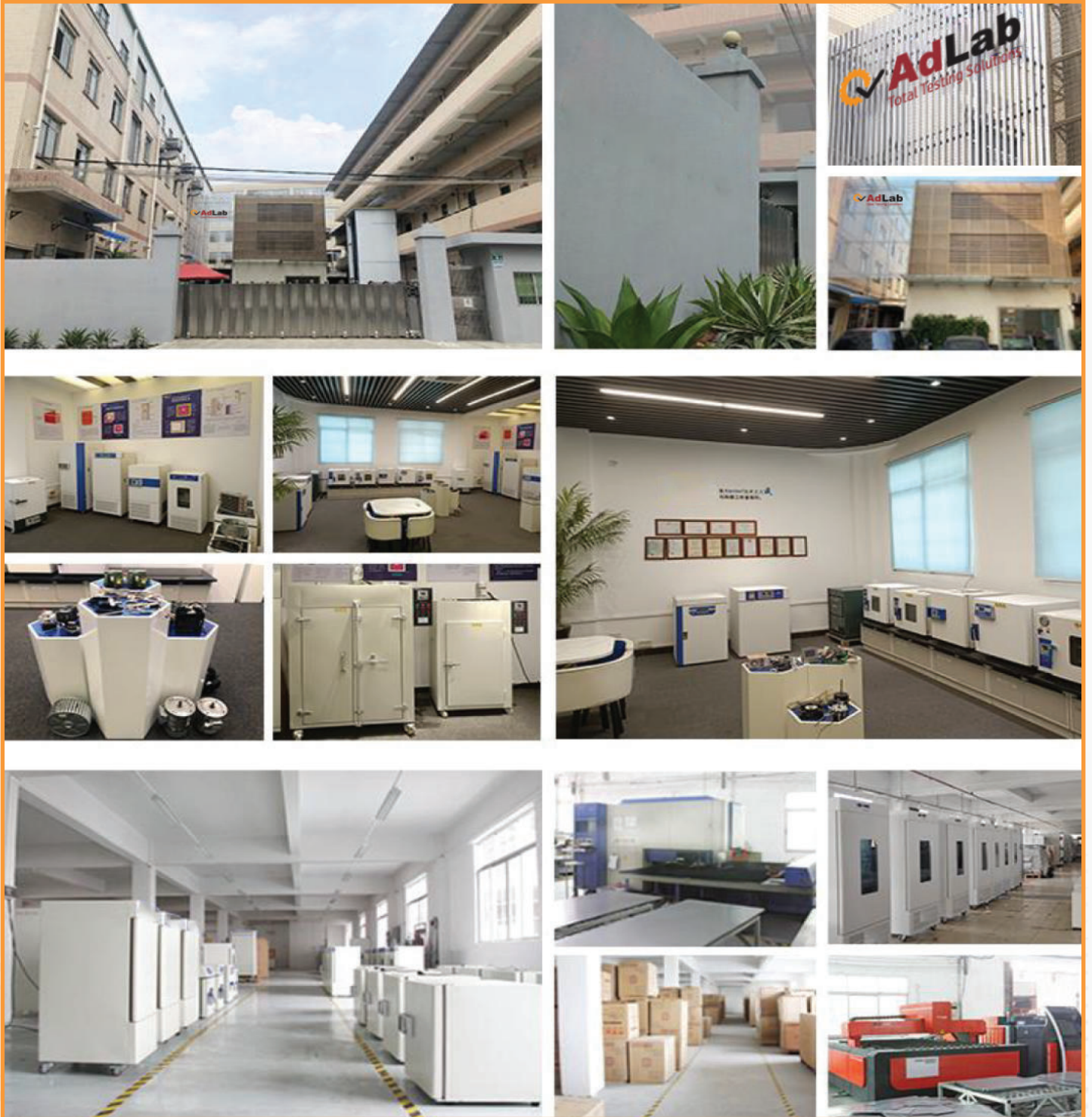
Laboratory Universal Electric Oven
Model: ADL-UF70

Comparison of Laboratory Universal Electric Oven

Universal Electric Oven	GX (advanced)	UF70/UF70-C update	KH/A/S basic	101/A/S classic	202/A (no motor fan)
Controller					
PID LCD	●	● No "C"			
PID Digital		"C" ●	●	"A" ●	"A" ●
Pointer				●	●
Brand accessories					
ST bi type thyristor	●				
Philip chip	●				
Taiwan optical coupler	●				
Internal material					
SUS304 SS	●				
Mirrored SS		●			
201 SS			"S" ●	"S" ●	
Galvanized steel			●	●	●
Motor fan					
High temperature resistant bearing	●	●			
Heat dissipation fan	●	●	●	●	
Electric element					
304 stainless steel	●				
201 stainless steel		●			
Carbon steel			●		
Heating coil				●	●
RS232 port	●	●			
Remote control	●	●			
Adjustable fan speed	●				
ALLHEAT cavity preheat	●				
ALLFLOW airflow	●				
ALLSENS temp.control	●				



**Laboratory Universal Electric Oven
Model: ADL-UF70**



**Technical Data Subject to change without notice.*

AdLab Instruments Co., Ltd

★ RM 602, 6/F, Kaiyue Comm Building, No.2C, Argyle Street, Mongkok Kowloon, Hong Kong

🇮🇪 20A Cuil Na Carriage, Ballymakeera, Co-Cork, Ireland (EU)

✉ info@adlabinstruments.com 🌐 www.adlabinstruments.com

AdLab is a globally recognized brand specializing in the manufacturing and supply of high-quality laboratory equipment and textile testing instruments. With over 15 years of experience, we are committed to delivering precision-engineered solutions that meet the needs of industries such as textiles, pharmaceuticals, research laboratories, and educational institutions. Our products are designed to enhance efficiency, accuracy, and reliability in scientific and industrial applications.

Our Skill

At AdLab, we combine expertise in precision engineering with advanced laboratory technology to create innovative and reliable testing instruments. Our team of skilled professionals continuously works on improving product designs, integrating the latest advancements in technology, and ensuring compliance with international quality standards. With a strong focus on research and development, we provide customized solutions that cater to the unique needs of our customers worldwide.

Our Products

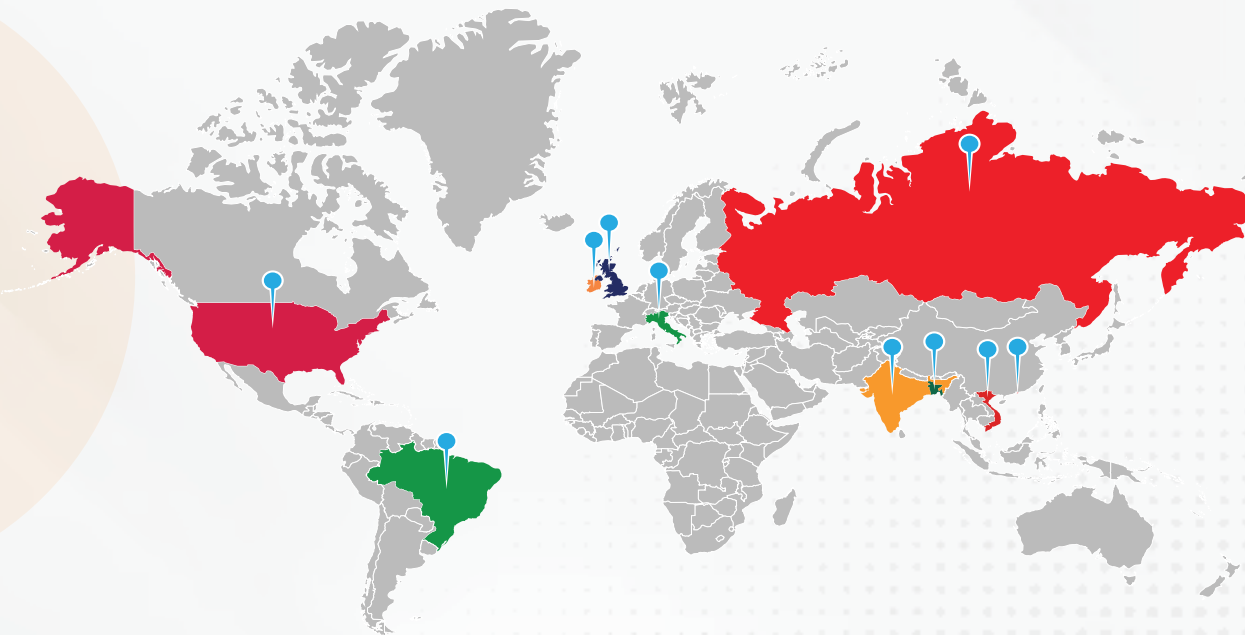
AdLab offers a wide range of high-quality laboratory and textile testing instruments, including Yarn & Fiber Testing Instruments, Laboratory Fume Hood Chambers, Ovens & Incubators, Water Baths, Textile Testing Instruments, Dyeing & Finishing Machines, Ceramic Testing, Tensile Testing, Washers & Dryers, Needle Detectors, and In-House Testing Equipment. Designed for precision and efficiency, our products ensure accurate testing and reliable performance across various industries.

Our Services

At AdLab, customer satisfaction is our top priority. We provide comprehensive support services to ensure the smooth operation of our equipment, including:

- ✓ 24/7 Technical Support Team – Our highly trained technical support team is available around the clock to assist with troubleshooting, maintenance, and operational guidance. Whether you need immediate assistance or expert advice, we are always ready to help.
- ✓ Installation & Training – We offer professional installation services and hands-on training to help users operate our equipment efficiently.
- ✓ Calibration & Maintenance – Regular calibration and maintenance services ensure that your laboratory instruments remain accurate and in optimal working condition.
- ✓ Customized Solutions – We provide tailored solutions to meet specific industry requirements, helping our clients achieve maximum efficiency in their operations.

Global Networks



Bangladesh • Brazil • China • Hong Kong • India • Ireland • Italy • UK • USA • Vietnam

AdLab Instruments Co., Ltd

★ RM 602, 6/F, Kaiyue Comm Building, No.2C, Argyle Street, Mongkok Kowloon, Hong Kong

🇮🇪 20A Cuil Na Carriage, Ballymakeera, Co-Cork, Ireland (EU)

✉ info@adlabinstruments.com 🌐 www.adlabinstruments.com