

Computerized Fiber Fineness Analysis System Model: ADL-YF005C

Overview

Computerized Fiber Fineness Analysis System applies to determine fiber diameter or sectional area rapidly in laboratories. The instrument connects optical microscope and computer by high-resolution industrial camera. The fiber diameter and sectional area testing can be completed by professional analysis software, and the content of each fiber in blended fiber can be measured.



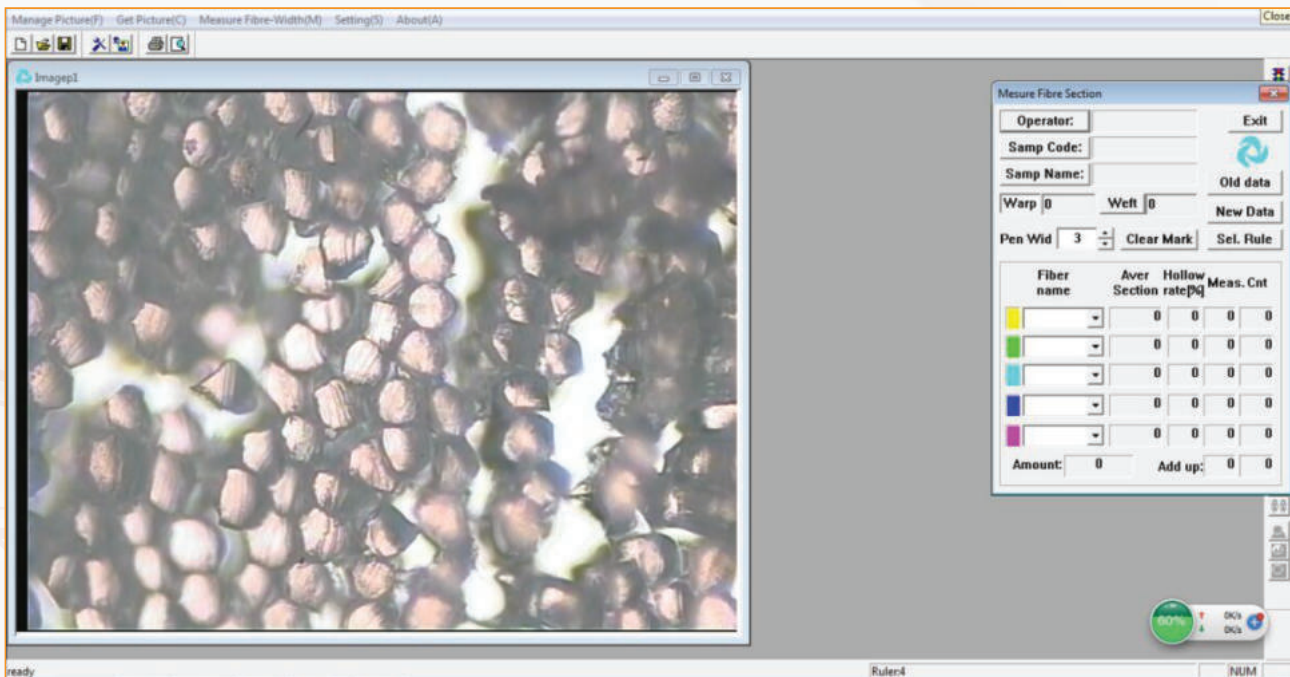
Standards

ISO 137, 17751 AATCC 20A

Note: this tester can conform to but not limit to the standards above, for more standards conformance, please contact us.

Features

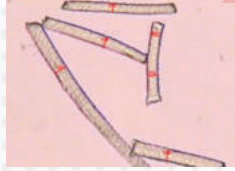
- Suit for determine the diameter of all kinds of fiber, adopt longitudinal section method.
- Meet the demands of ISO 137, IWTO-8, GB/T 10685, etc.
- Professional analysis software, output the data and report forms by EXCEL.



Computerized Fiber Fineness Analysis System Model: ADL-YF005C

Specifications

- Testing method : Longitudinal section method



- Main testing item : Diameter
- Measuring range : 2~200um±0.5um (adjustable)
- Measuring repeatability : ±0.1um
- Objective lens : 4X, 10X, 20X
- Dimensions : 18*24*47cm (not including PC)
- Net weight : 35kg

Standard Configuration

- Microscope - 1 Set
- Digital camera - 1 Set
- PC - 1 Set
- Professional analysis software - 1 Set
- Micrometer scale - 1 pc
- Hardy sample cutter - 1 Set

Optional Accessories

- Printer
- Objective lens 40X (Used for cross-sectional method)

**Technical Data Subject to change without notice.*

AdLab is a globally recognized brand specializing in the manufacturing and supply of high-quality laboratory equipment and textile testing instruments. With over 15 years of experience, we are committed to delivering precision-engineered solutions that meet the needs of industries such as textiles, pharmaceuticals, research laboratories, and educational institutions. Our products are designed to enhance efficiency, accuracy, and reliability in scientific and industrial applications.

Our Skill

At AdLab, we combine expertise in precision engineering with advanced laboratory technology to create innovative and reliable testing instruments. Our team of skilled professionals continuously works on improving product designs, integrating the latest advancements in technology, and ensuring compliance with international quality standards. With a strong focus on research and development, we provide customized solutions that cater to the unique needs of our customers worldwide.

Our Products

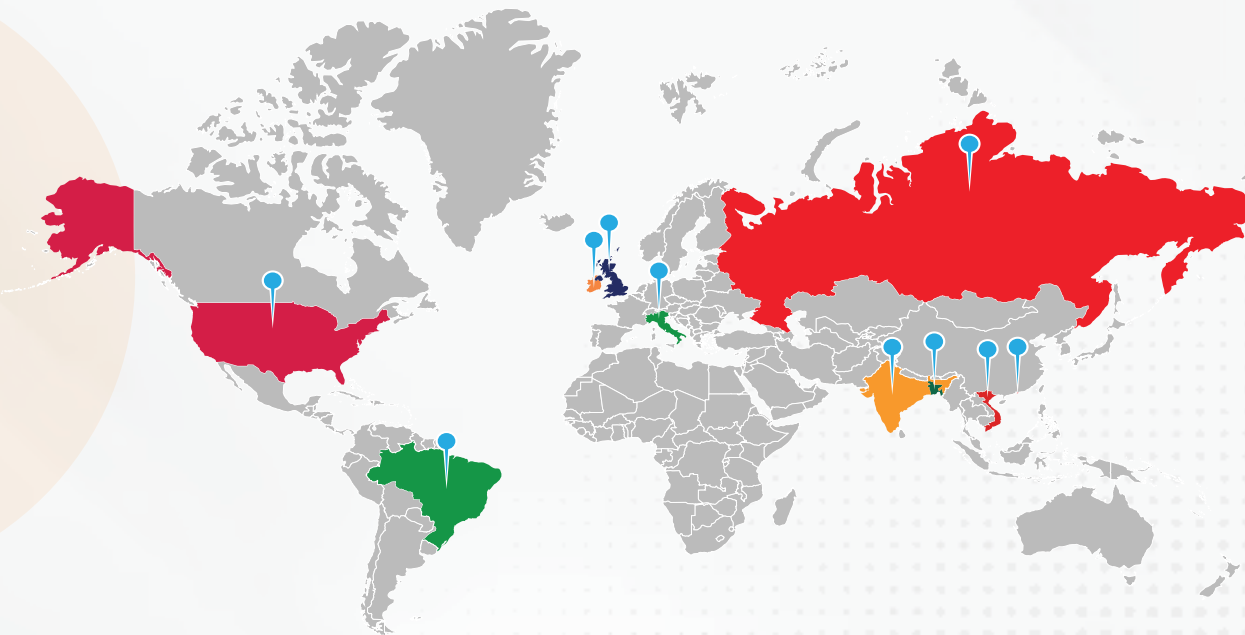
AdLab offers a wide range of high-quality laboratory and textile testing instruments, including Yarn & Fiber Testing Instruments, Laboratory Fume Hood Chambers, Ovens & Incubators, Water Baths, Textile Testing Instruments, Dyeing & Finishing Machines, Ceramic Testing, Tensile Testing, Washers & Dryers, Needle Detectors, and In-House Testing Equipment. Designed for precision and efficiency, our products ensure accurate testing and reliable performance across various industries.

Our Services

At AdLab, customer satisfaction is our top priority. We provide comprehensive support services to ensure the smooth operation of our equipment, including:

- ✓ 24/7 Technical Support Team – Our highly trained technical support team is available around the clock to assist with troubleshooting, maintenance, and operational guidance. Whether you need immediate assistance or expert advice, we are always ready to help.
- ✓ Installation & Training – We offer professional installation services and hands-on training to help users operate our equipment efficiently.
- ✓ Calibration & Maintenance – Regular calibration and maintenance services ensure that your laboratory instruments remain accurate and in optimal working condition.
- ✓ Customized Solutions – We provide tailored solutions to meet specific industry requirements, helping our clients achieve maximum efficiency in their operations.

Global Networks



Bangladesh • Brazil • China • Hong Kong • India • Ireland • Italy • UK • USA • Vietnam

AdLab Instruments Co., Ltd

★ RM 602, 6/F, Kaiyue Comm Building, No.2C, Argyle Street, Mongkok Kowloon, Hong Kong

🇮🇹 20A Cuil Na Carriage, Ballymakeera, Co-Cork, Ireland (EU)

✉ info@adlabinstruments.com 🌐 www.adlabinstruments.com