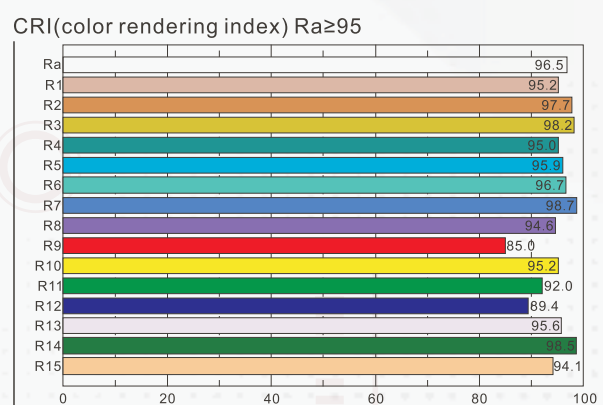
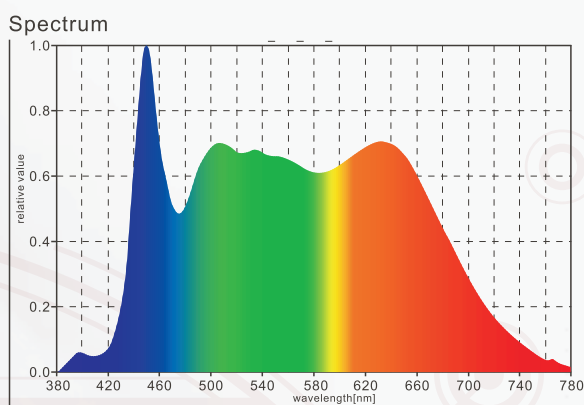


## Color Matching Cabinet Model: TruVision



Configured Light source: D65/A/D50/UV/U30/TL84/U35/CWF/L40-8/L35-8/L30-8/L31-8

D50 (LED) Power 15W



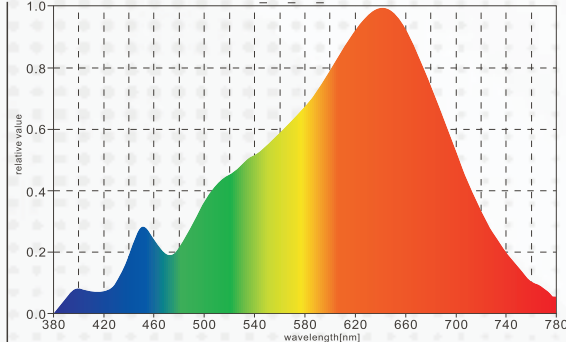
Features:

- 1. Color rendering index Ra≥95;
- 2. CCT2300±5000K;
- 3. No flicker. Dimmable
- 4. 60%+ is more efficient than fluorescent tubes and no mercury;
- 5. The PC tube is not easy to be damaged during transportation;

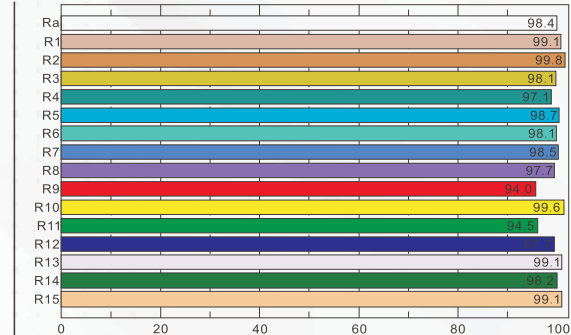
## Color Matching Cabinet Model: TruVision

### A (LED) Power 15W

Spectrum



CRI(color rendering index) Ra≥95

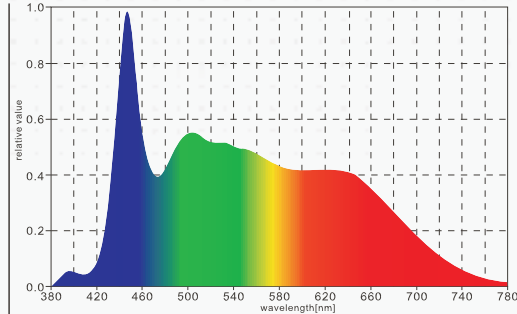


Features:

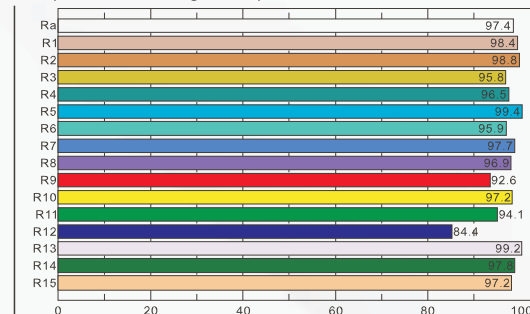
1. Color rendering index Ra≥95;
2. CCT2800±200K;
3. No flicker. Dimmable
4. 60%+ is more efficient than fluorescent tubes and no mercury;
5. The PC tube is not easy to be damaged during transportation;

### D65 (LED) Power 15W

Spectrum



CRI(color rendering index) Ra≥95

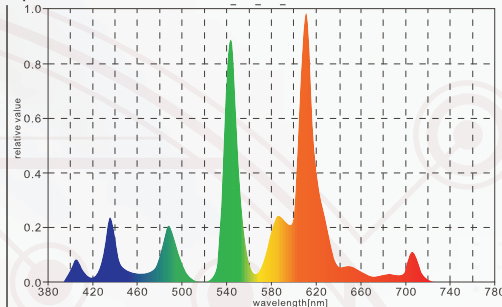


Features:

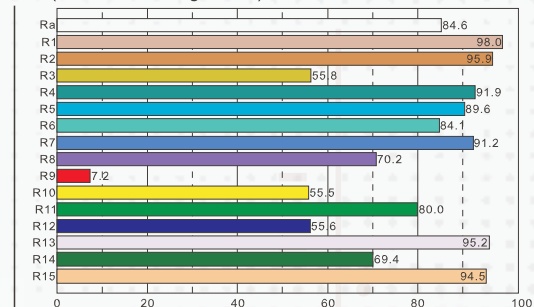
1. Color rendering index Ra≥95;
2. CCT6500±200K;
3. No flicker. Dimmable
4. 60%+ is more efficient than fluorescent tubes and no mercury;
5. The PC tube is not easy to be damaged during transportation;

### U30 (fluorescent lamp) Power 25W / LED L30-8 / L31-9 (3100K)

Spectrum



CRI(color rendering index) Ra≥80



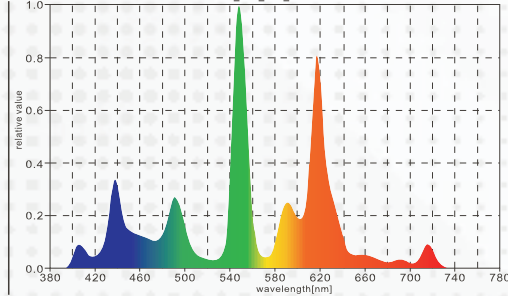
Features:

1. Color rendering index Ra≥80;
2. CCT3000±200K;
3. No flicker. Dimmable

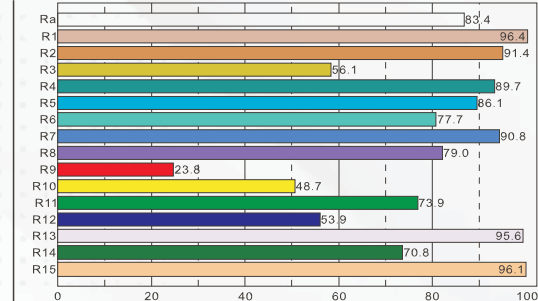
## Color Matching Cabinet Model: TruVision

### TL84 (fluorescent lamp) Power 30W / LED L40-8 (4000K)

Spectrum



CRI(color rendering index) Ra≥80

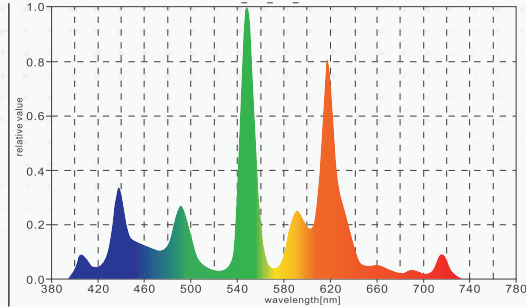


Features:

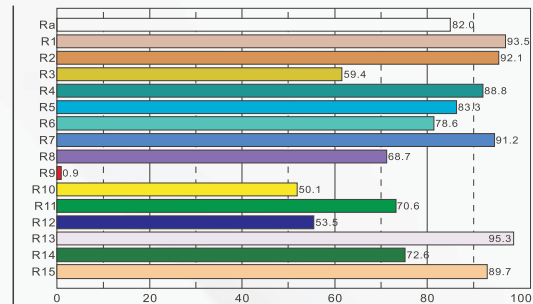
1. Color rendering index Ra≥80;
2. CCT4000±200K;
3. No flicker. Dimmable

### U35 (fluorescent lamp) Power 25W / LED L35-8 (3500K)

Spectrum



CRI(color rendering index) Ra≥80



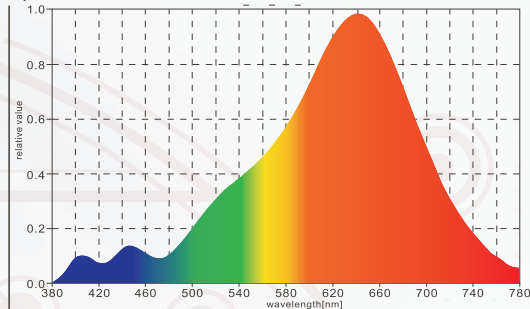
Features:

1. Color rendering index Ra≥80;
2. CCT3500±200K;
3. No flicker. Dimmable

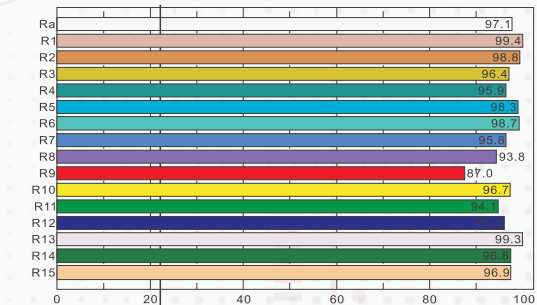
### Optional Light Source: H, D75, CWF, TL83

#### H (LED) Power 15W

Spectrum



CRI(color rendering index) Ra≥95



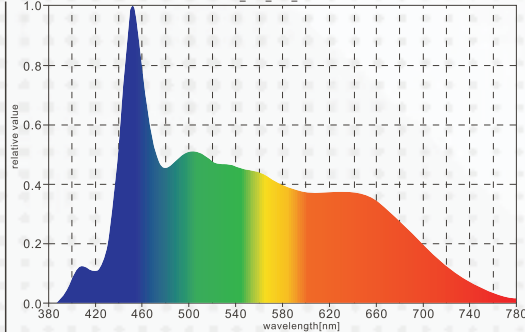
Features:

1. Color rendering index Ra≥95;
2. CCT2300±100K;
3. No flicker. Dimmable
4. 4.60%+ is more efficient than fluorescent tubes and no mercury;
5. The PC tube is not easy to be damaged during transportation;

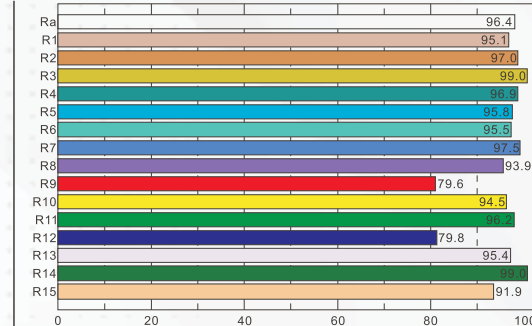
## Color Matching Cabinet Model: TruVision

### D75 (LED) Power 15W

Spectrum



CRI(color rendering index ) Ra≥95



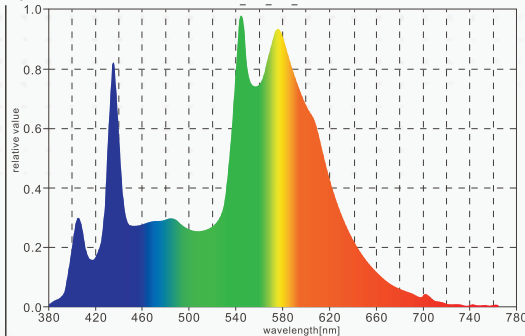
Features:

- 1.Color rendering index Ra≥95;
- 2.CCT7500±200K;
- 3.No flicker. Dimmable

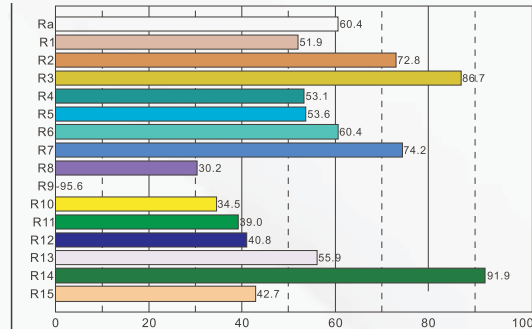
- 4.60%+ is more efficient than fluorescent tubes and no mercury;
- 5.The PC tube is not easy to be damaged during transportation;

### CWF (fluorescent lamp) Power 30W

Spectrum



CRI(color rendering index ) Ra≥60

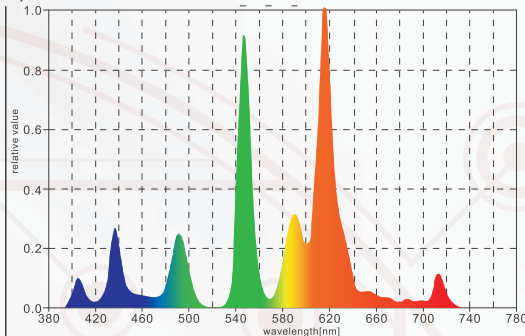


Features:

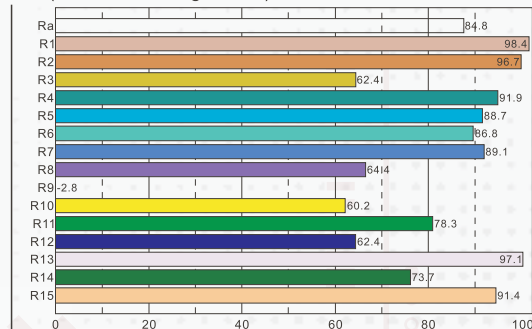
- 1.Color rendering index Ra≥60;
- 2.CCT4150±200K;
- 3.No flicker. Dimmable

### TL83 (fluorescent lamp) Power 30W

Spectrum



CRI(color rendering index ) Ra≥80

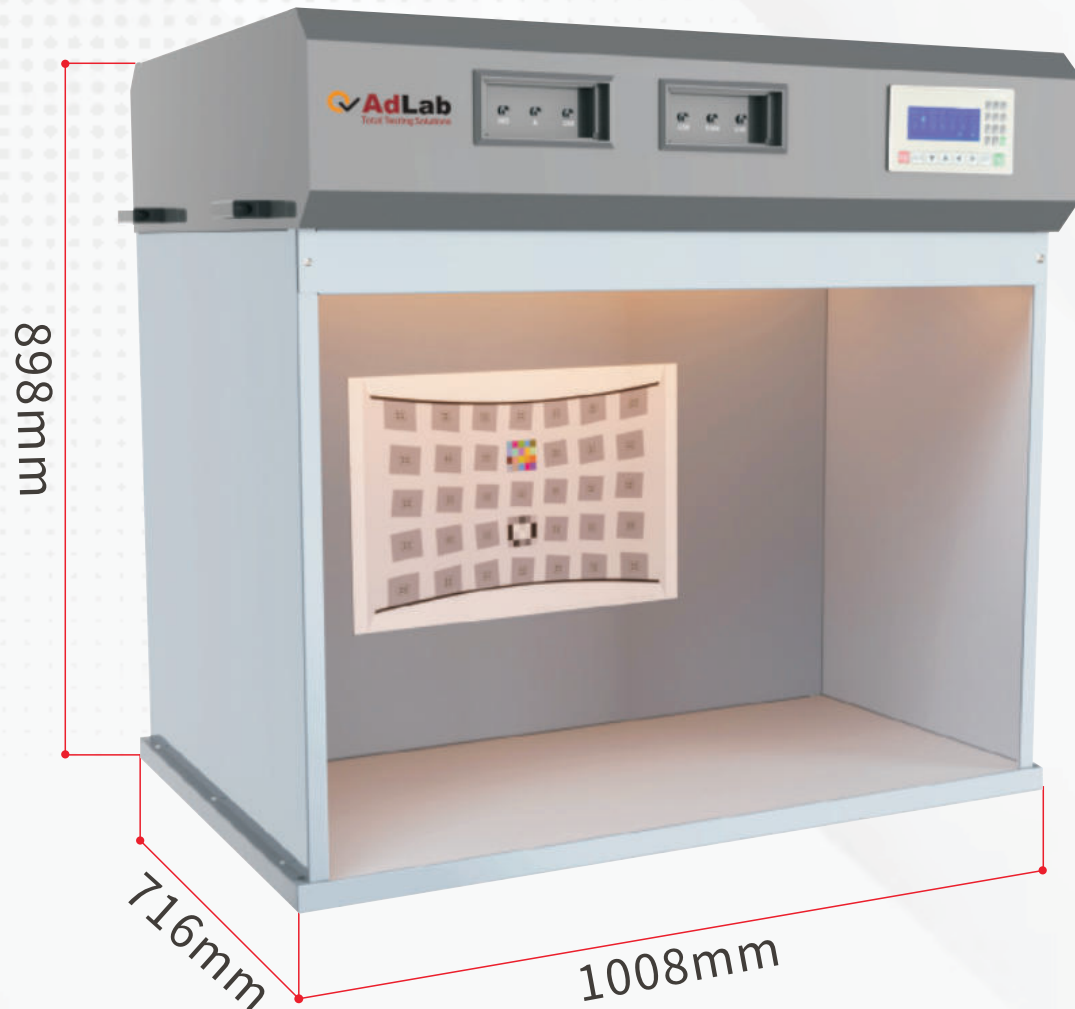


Features:

- 1.Color rendering index Ra≥80;
- 2.CCT3000±200K;
- 3.No flicker. Dimmable



## Size Parameter




## Features

1. Use a new design that combines the advantages of British and American light boxes
2. 7 kinds of light source , 4 groups of LED light (Life up to 25000 times) 3 groups of fluorescent light source.
3. Displays the usage time and total times of each light source
4. The light source can be switched freely, with the function of metamerism
5. The name of light source can be changed, adding light source is more convenient
6. No stroboscopic, can ensure fast and reliable color evaluation
7. Low energy consumption, without heating (no need for heat dissipation), high luminous efficiency
8. The illuminance of the light source can be adjusted

TruVision light box is controlled by a programmable text controller and PLC, which is more convenient to operate and use. Various light sources can be switched freely, and the number of times and hours of use of each light source can be displayed and can be cleared. The work surface and surrounding area are neutral colors, and the gloss is low. To avoid interference from outside light, outside light should not directly illuminate the opening of the observation box.

## AdLab Instruments Co., Ltd

 RM 602, 6/F, Kaiyue Comm Building, No.2C, Argyle Street, Mongkok Kowloon, Hong Kong

 20A Cuil Na Carriage, Ballymakeera, Co-Cork, Ireland (EU)

 [info@adlabinstruments.com](mailto:info@adlabinstruments.com)  [www.adlabinstruments.com](http://www.adlabinstruments.com)

## Color Matching Cabinet Model: TruVision

### Product Parameters

Model	TruVision (7 Light Source)	
Weight	60Kg	
Size: 3 Feet (S*D*H)	1008x716x898mm	
Standard Light source	ASTM/BS/CIE/ISO/DIN/TL84/ANSI	
Light source	D65/A/D50/UV/U30/TL84/U35/CWF/L40-8/L35-8/L30-8/L31-8	
Power supply	AC 220V~240V,50/60Hz	
The standard light tube specifications		
Model	Quantity	Specs Parameter
LED light 1 D65	2 pcs	15W, CC 6500±200K, Ra95
LED light 2 A	2 pcs	15W, CCT2850±200K, Ra96
LED light 3 D50	2 pcs	15W, CCT5000±200K, Ra95
LED light 4 UV	2 pcs	15W, wavelength 385nm
Fluorescent 5 U30 / LED L30-8 / L31-9 (3100K)	2 pcs	25W, CCT3000±200K, Ra80
Fluorescent 6 LED L40-8 (4000K)	2 pcs	30W, CCT4000±200K, Ra85
Fluorescent 7 U35 / L35-8 (3500K)	2 pcs	25W, CCT3500±200K, Ra85

*\*Technical Data Subject to change without notice.*

AdLab is a globally recognized brand specializing in the manufacturing and supply of high-quality laboratory equipment and textile testing instruments. With over 15 years of experience, we are committed to delivering precision-engineered solutions that meet the needs of industries such as textiles, pharmaceuticals, research laboratories, and educational institutions. Our products are designed to enhance efficiency, accuracy, and reliability in scientific and industrial applications.

## Our Skill

At AdLab, we combine expertise in precision engineering with advanced laboratory technology to create innovative and reliable testing instruments. Our team of skilled professionals continuously works on improving product designs, integrating the latest advancements in technology, and ensuring compliance with international quality standards. With a strong focus on research and development, we provide customized solutions that cater to the unique needs of our customers worldwide.

## Our Products

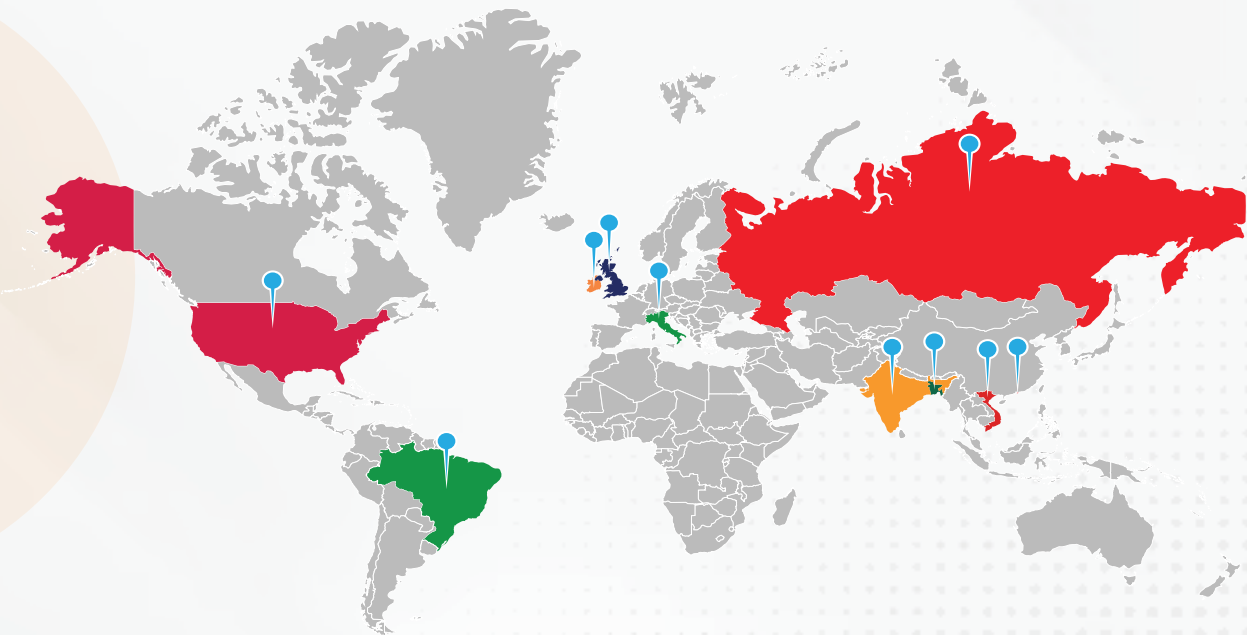
AdLab offers a wide range of high-quality laboratory and textile testing instruments, including Yarn & Fiber Testing Instruments, Laboratory Fume Hood Chambers, Ovens & Incubators, Water Baths, Textile Testing Instruments, Dyeing & Finishing Machines, Ceramic Testing, Tensile Testing, Washers & Dryers, Needle Detectors, and In-House Testing Equipment. Designed for precision and efficiency, our products ensure accurate testing and reliable performance across various industries.

## Our Services

At AdLab, customer satisfaction is our top priority. We provide comprehensive support services to ensure the smooth operation of our equipment, including:

- ✓ 24/7 Technical Support Team – Our highly trained technical support team is available around the clock to assist with troubleshooting, maintenance, and operational guidance. Whether you need immediate assistance or expert advice, we are always ready to help.
- ✓ Installation & Training – We offer professional installation services and hands-on training to help users operate our equipment efficiently.
- ✓ Calibration & Maintenance – Regular calibration and maintenance services ensure that your laboratory instruments remain accurate and in optimal working condition.
- ✓ Customized Solutions – We provide tailored solutions to meet specific industry requirements, helping our clients achieve maximum efficiency in their operations.

## Global Networks



**Bangladesh • Brazil • China • Hong Kong • India • Ireland • Italy • UK • USA • Vietnam**

### AdLab Instruments Co., Ltd

★ RM 602, 6/F, Kaiyue Comm Building, No.2C, Argyle Street, Mongkok Kowloon, Hong Kong

🇮🇪 20A Cuil Na Carriage, Ballymakeera, Co-Cork, Ireland (EU)

✉ info@adlabinstruments.com 🌐 www.adlabinstruments.com