



Color Fastness Tester for Ironing Sublimation Model: ADL-CST210L

Testing Instrument for Ironing Color Fastness of Materials

Color fastness tester for ironing sublimation, It is used for the performance test of color fastness to hot pressing resistance ironing and pressing and dry heat (sublimation) of various dyed printing textile materials and textiles. It can also be used to determine the sublimation of color fastness test for chlorine resistance, scorching, yellowing test of bleaching products, and disperse dyes of textiles, as well as water fastness test of reactive dyes, dimensional stability at high temperature, etc. Besides, it is commonly used in textile and garment fields such as printing and dyeing fabrics, textile auxiliaries, etc., which can effectively control production and test product performance.



Color Fastness Tester for Ironing Sublimation

The unique large test panel can improve the test efficiency and make the tester suitable for more test standard requirements. The upper and lower independent temperature control system can ensure the safety and can be used for hot press ironing test and dry heat test, which is flexible and varied.

The new ADL-CST210L ironing sublimation color fastness tester has a larger test area, which can meet the needs of users to test multiple samples in single test. The tester has functions of over temperature protection, overload protection, electric leakage protection, and access control protection, which is safe and reliable.

Standards compliant

- GB/T 5718 Textile color fastness test
- P01 part: color fastness to dry heat (except hot pressing)
- GB/T 6152 Textiles, color fastness test, Colour fastness to hot pressing
- JIS L0879 Test method of dyeing color fastness to dry heat
- JIS L0850 Colour fastness to hot pressing.
- ISO 105 P01 Textiles - Tests for colour fastness
- Part P01: colour fastness to dry heat (including heat treatment)
- ISO 105 X11 Textiles - Tests for colour fastness
- Part X11: Colour fastness to hot pressing
- AATCC 117 Colour fastness to dry heat (no pressure)
- AATCC 133 Colour fastness to high temperature (hot pressing)
- M&S C13 Colour fastness to high temperature (hot pressing)
- M&S C10 Dimensional stability test



Color Fastness Tester for Ironing Sublimation Model: ADL-CST210L

Several Major Features

Upper and lower heating module independent temperature control

The upper and lower independent temperature control system adopts PID temperature control program, with features of high temperature control precision, low heating overload efficiency, and equipped with PT 100 temperature sensor.



Floating pressurized design

The floating design is carried out when the load is pressurized, allowing the testing of materials of different thicknesses. The pressure distribution and uniform heating can still be ensured in case of testing thicker materials.



Independent temperature control system

The timer is configured to preset the test time. It is automatically start the test timing once the upper platen is pressed downwards, and the buzzer is configured to prompt the test end.

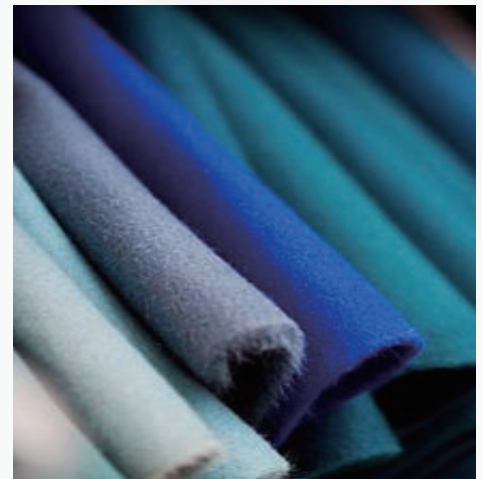
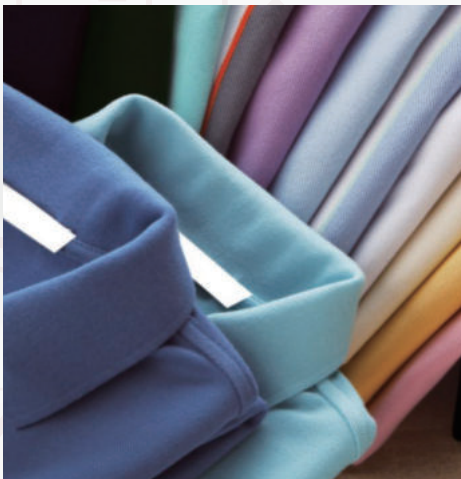


Unique appearance design

The appearance of the tester is exquisite and beautiful. The insulation around the upper and lower heating plates is designed with insulation material to ensure that the heat of the heating plate is not transmitted to the outer casing, which is safe and reliable .



Field Application



Color fastness tester for ironing sublimation, It is widely used for the hot pressing resistance ironing and pressing of various dyed printing textile materials, dry heat (sublimation) test, textile chlorine resistance, scorching, yellowing test of bleaching products, and water fastness test of reactive dyes, as well as dimensional stability at high temperature.

Color Fastness Tester for Ironing Sublimation Model: ADL-CST210L

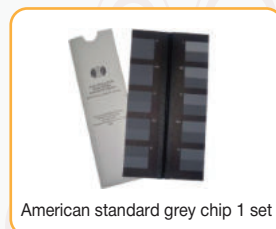
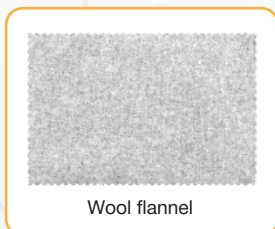


It is applicable to the performance verification of new products , quality control of the production department, and the of material properties for the third-party testing organization, the product performance verification laboratory, and the quality and technical supervision department, etc.

Technical Parameters

Test hot plate: 210 × 210mm (same of the upper and lower)	Temperature control: independent control of the upper and lower
Heating plate metallurgy: high purity aluminum	Warming-up time: user-defined
Timer: preset time, automatic timing once the upper plate pressing downwards.	Applicable test: hot pressing, dry heat, dimensional stability
Heating range: ambient temperature -300°C	Time alarming: buzzing alarm
Hot panel pressure : 4±1 KPa(40cm2)	Weight: 25kg
Power : 220V 1.6Kw independent control	Power supply: 220V 50Hz
of the upper and lower	Appearance size: 400mmX400mmX450mm

Optional Accessories



**Technical Data Subject to change without notice.*

AdLab is a globally recognized brand specializing in the manufacturing and supply of high-quality laboratory equipment and textile testing instruments. With over 15 years of experience, we are committed to delivering precision-engineered solutions that meet the needs of industries such as textiles, pharmaceuticals, research laboratories, and educational institutions. Our products are designed to enhance efficiency, accuracy, and reliability in scientific and industrial applications.

Our Skill

At AdLab, we combine expertise in precision engineering with advanced laboratory technology to create innovative and reliable testing instruments. Our team of skilled professionals continuously works on improving product designs, integrating the latest advancements in technology, and ensuring compliance with international quality standards. With a strong focus on research and development, we provide customized solutions that cater to the unique needs of our customers worldwide.

Our Products

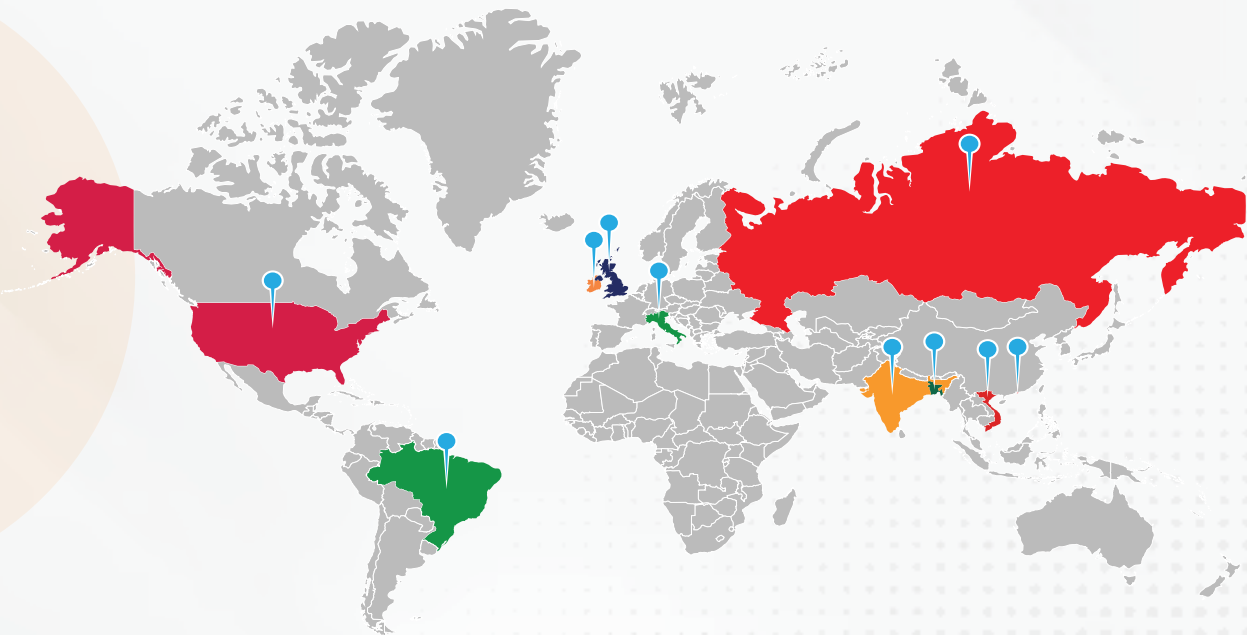
AdLab offers a wide range of high-quality laboratory and textile testing instruments, including Yarn & Fiber Testing Instruments, Laboratory Fume Hood Chambers, Ovens & Incubators, Water Baths, Textile Testing Instruments, Dyeing & Finishing Machines, Ceramic Testing, Tensile Testing, Washers & Dryers, Needle Detectors, and In-House Testing Equipment. Designed for precision and efficiency, our products ensure accurate testing and reliable performance across various industries.

Our Services

At AdLab, customer satisfaction is our top priority. We provide comprehensive support services to ensure the smooth operation of our equipment, including:

- ✓ 24/7 Technical Support Team – Our highly trained technical support team is available around the clock to assist with troubleshooting, maintenance, and operational guidance. Whether you need immediate assistance or expert advice, we are always ready to help.
- ✓ Installation & Training – We offer professional installation services and hands-on training to help users operate our equipment efficiently.
- ✓ Calibration & Maintenance – Regular calibration and maintenance services ensure that your laboratory instruments remain accurate and in optimal working condition.
- ✓ Customized Solutions – We provide tailored solutions to meet specific industry requirements, helping our clients achieve maximum efficiency in their operations.

Global Networks



Bangladesh • Brazil • China • Hong Kong • India • Ireland • Italy • UK • USA • Vietnam

AdLab Instruments Co., Ltd

★ RM 602, 6/F, Kaiyue Comm Building, No.2C, Argyle Street, Mongkok Kowloon, Hong Kong

🇮🇪 20A Cuil Na Carriage, Ballymakeera, Co-Cork, Ireland (EU)

✉ info@adlabinstruments.com 🌐 www.adlabinstruments.com